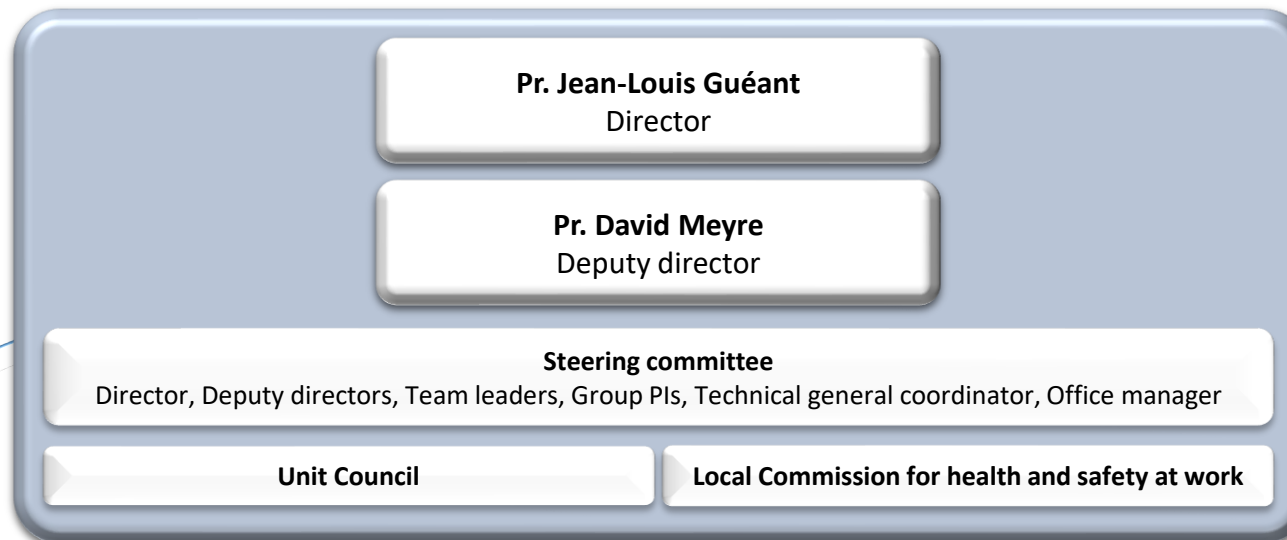


# Inserm U1256 Laboratory nGERE



## Team 1: The one carbon metabolism and epigenomics in the developmental origins of inherited and complex diseases

PI: Jean-Louis Guéant (PU/PH)

### Group I – One-carbon metabolism and neurodevelopment

Co-PI: C. Bossenmeyer-Pourie (PU)  
 PU/PH : P. Jonveaux, AC. Ben Mahmoud  
 PU : B. Leininger-Muller  
 MCU/PH : C. Bonnet, M. Renaud  
 MCF : G. Pourie, T. Kokten, H. Schroeder,  
 PH : L. Hopes  
 PhD Student : P. Dimofski, J.M. Ravel (4<sup>rd</sup> year), A. Michel, S. Puisieux (2<sup>nd</sup> year), E. Pourie, T. Alix (1<sup>st</sup> year)  
 ATER : N. El Wanny, P. Dimofski

### Group II – Pathomechanisms of inherited diseases of the one carbon metabolism

Co-PI: D. Coelho (CR)  
 PU/PH : F. Feillet  
 MCU/PH : L. Goffinet-Pleutret  
 MCF : N. Dreumont  
 PH : É. Jeannesson-Thivisol, L. Lambert  
 Clinical research : C. Chéry (CHRU)  
 PhD Student : A. Malardé (1<sup>st</sup> year), M. Jeandel (2<sup>nd</sup> year),

### Group III – Developmental origins of complex diseases

Co-PI Rosa-Maria Rodriguez-Guéant (PU/PH)  
 PU/PH : J.P. Bronowicki, L. Brunaud, C. Christov, J.B. Conart, J.L. Guéant, D. Meyre, D. Quilliot, O. Ziegler, A. Oussalah  
 MCU/PH : I. Koscinski  
 PA: V. Ulaganathan CPJ: A. Heinken  
 PHU : É. Renard PAST : N. Grova  
 ACC/AHU : I. Rotaru\*, F. Bihain, A. Wiedemann\*, V. Haghnejad\* (\*PhD CH : Y. Siblini  
 IR : S. Seal Emeritus : J.P. Nicolas  
 PhD Students : P.H. Graindorge & A. Gallizzi (2<sup>nd</sup> year), S. El Kouche & A. Noël (1<sup>st</sup> year)

## Office administration

C. Reppert: general coordinator (TCH)  
 C. Tavera: research and teaching (ADJ)  
 N. Thirion: research (ADJ)

## Technical general coordinator: J.M. Alberto (IE)

### Functional genomics platform

Scientific director : J.L. Guéant

**Genomics platform** : C. Chéry (Coordinator CHRU, IGH), R. Alsaied (Coordinator UL, IE), P. Rouyer (Referent, TCH), P. Renard (ADJ)

**Sector of Bioinformatics**: S. Hergalant (Coordinator, IR), P. Rouyer (TCH), G. Fievet (Engineer), R. Piucco (Engineer), R. Alsaied (IE)

## Technical expertises:

- *Molecular biology*: A. Robert (Referent, ASI), P. Renard (ADJ)
- *Immunological labelling and Imaging*: J. Paoli (Referent, TCH), B. Merouani (Referent, TCH)
- *Animal Housing*: J.M. Alberto (Coordinator), Rémy Umoret (Referent, TCH<sup>o</sup>, V. Laplace (TCH)
- *Cell Culture (L2)*: A. Julien (Referent, TCH)
- *Metabolomics*: J.M. Alberto (LCMS), O. Baspinar (LCMS referent), P. Renard
- *IT team*: S. Hergalant (Coordinator), P. Rouyer (Referent)
- *Technical expertise (IBD)* : A. Depp (TCH)
- *Animal experimentation for the study of a specific rare disease*: B. Merouani (ASI\*), J. Antoine (IE)
- *Research support*: T. Fontaine (ADJ), R. Varsovie (TCH)
- *Health and safety*: J.M. Alberto (Coordinator, monitoring of the agreement), A. Robert
- *Radiation safety advisor*: J.M. Alberto

## Team 2: Metabolic-genomic interactions in personalized medicine and therapeutic innovation of chronic inflammatory bowel diseases.

PI: Laurent Peyrin-Biroulet (PU/PH)

PU/PH : A. Germain  
 MCU/PH : I. Aimone-Gastin, J.B. Chevaux, A. Lopez  
 MCF : N.C. Ndiaye, F. Hansmannel, T. Kokten  
 PH : B. Caron  
 PhD Students : M. Muller (3<sup>rd</sup> year), J. Alfaifi (1<sup>st</sup> year)

## Team 3: Metabolism, Integrative genomics & Bioinformatics

PI: Rémi Houlgatte, DR, Co-PI : Guillaume Gauchotte (PU/PH)

### Axis 1. Genomics of lymphomas and lymphoid malignancies

PI: R. Houlgatte (DR)  
 PU/PH : P. Feugier, J. Broséus  
 MCU/PH : PH : J.F. Lesesve  
 PhD Student : M. Divoux (4<sup>th</sup> year), R. Piucco (1<sup>st</sup> year)

### Axis 2. Metabolism, Genomics & Cancer

PI: G. Gauchotte (PU/PH)  
 PU/PH : B. Namour, H. Sartelet  
 MCU/PH : M. Agopiantz, P. Gallet